



VIVALDI
UNITED GROUP®

vivaldigroup.it

GARANZIA ITALIA

Il documento che certifica la garanzia è la fattura di vendita. La validità della garanzia di un prodotto sarà accertata esclusivamente dal CENTRO ASSISTENZA VIVALDI. Il periodo di garanzia avrà la durata di 12 mesi, dalla data di consegna merce. I prodotti e l'imballo al momento della riconsegna non dovranno risultare manomessi. La VIVALDI SRL si impegnerà alla sostituzione o riparazione delle parti componenti la fornitura, che risultassero difettose, sempre che ciò non dipenda da imperizia o negligenza, manomissioni, da casi fortuiti o di forza maggiore. I lavori inerenti alle riparazioni o sostituzioni in garanzia saranno eseguiti dal VIVALDI CUSTOMER SERVICE (0421.307825 int. 4) in fabbrica, oppure sul posto (nei termini sotto indicati), senza che ciò comporti nessuna responsabilità a carico della Vivaldi srl per danni diretti o indiretti subiti dal cliente a causa di ciò. Laddove ragioni di esercizio imponessero di riparare le apparecchiature sul posto, restano a carico del cliente le spese di trasferimento e di permanenza fuori sede del personale tecnico, che verranno addebitate con regolare fattura. In caso di inosservanza di una o più norme sopra elencate la garanzia decade.

Note: le richieste di autorizzazione al reso per riparazione devono essere inviate tramite compilazione del seguente form <https://vivaldigroup.it/it/rma>. Il VIVALDI RVICE (tecnico@vialdigroup.it) risponderà via mail rilasciando il numero di autorizzazione al reso e indicando la procedura da seguire.

FOREIGN WARRANTY

Warranty terms. The term and warranty may vary by country and may not be the same for all products. Warranty terms and conditions for a specific product can be determined first by locating the appropriate country where the product was purchased, then identifying the type of product.

VIVALDI UNITED GROUP divisione VIVALDI Srl

Via Edison, 2 - 30020 Noventa di Piave (VE) - IT - Tel. +39 0421.307825 - Fax. +39 0421.307845

info@vivaldigroup.it - www.vivaldigroup.it

© 2019 Vivaldi Srl

Vivaldi srl nel costante impegno di migliorare i propri prodotti si riserva il diritto di apportare modifiche tecniche ed estetiche senza alcun obbligo di preavviso.

INSTALLATION INSTRUCTIONS



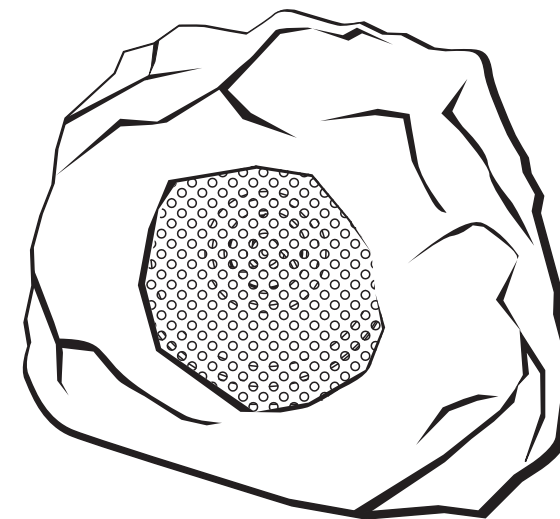
VIVALDI
UNITED GROUP®

vivaldigroup.it

english
italiano

ULISSE ROCK 1 6T

User Manual Manuale d'utilizzo



Outdoor SPEAKER

Introduction

Thank you for buying outdoor speaker. Please read and have a thorough understanding of the entire manual before installation and use. Keep the manual for maintenance.

IMPORTANT: VIVALDI SRL has made every effort to provide accurate and detailed instruction for this product's assembly and installation. Should you have any doubts consult a qualified professional fitter, VIVALDI SRL recognizes no liability for any difficulty or problem derived from the interpretation of these instructions. These brackets and all their parts and accessories must only be used for the purpose they have been constructed. VIVALDI SRL, its commercial distributors and retailers are not, directly or indirectly, responsible for any damage to persons and or properties derived from the use of this product in an unsafe or different way for which it has been designed and constructed. Several parts of this product are small pieces of hardware therefore extreme care should be taken to keep them from children.

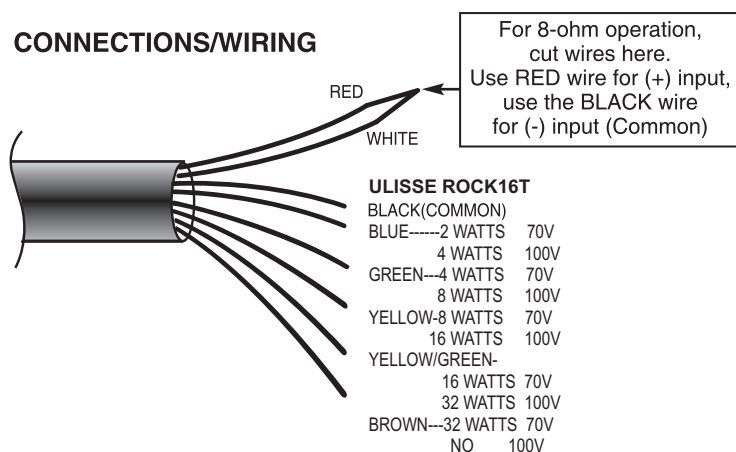
Read these instructions carefully before using the product

1. When the speakers are installed outdoor, check that the wall structure is reliable and that the speaker is firmly attached. The user should be responsible for this very thing.
2. Do not place the speakers on a turntable or movable support.
3. Do not touch or bump the woofer and tweeter. If these are damaged, the sound will be distorted.
4. Do not listen to sound at a very high level when you are changing the input source (for example, to tune FM / CD) installation or removal of cables should make sure that the power amp / amplifier device radio is turned off.
5. Don't attempt to clean the speakers with chemical solvents as this may damage the paint surface. Clean with a dry cloth.

Direct Burial Wire or Conduit

Depending on the type of installation, direct burial of the speaker wires from the amplifier to the loudspeakers may be adequate, or the use of 12 ID conduit may be required for protecting the wires from possible physical damage if future excavation or other alterations are anticipated in the area of the installation.

CONNECTIONS/WIRING



Connections can be protected using one of the following methods:

- Solder wires together using waterproof heat shrink tubing to seal.
- Use Waterproof Wire Connectors.
- Make connections with immersion-resistant Crimp Splices (Raychem).
- Use Grease Wire Caps available from several suppliers (Orbit, Toro Irrigation, etc.).

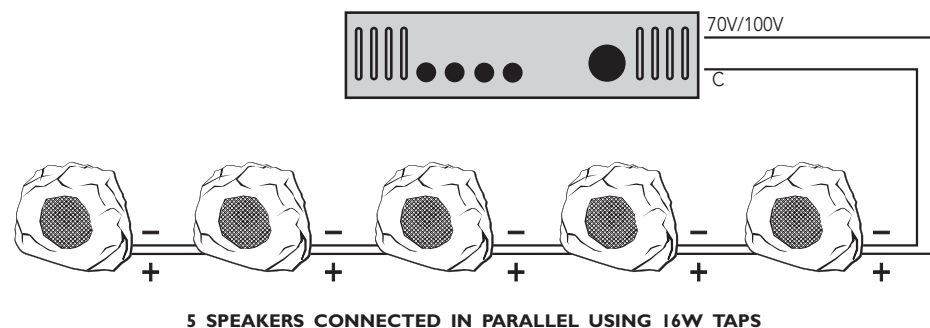
Connection

Use wire on the back of the speaker in the output tab of the amplifier (or amplifiers of radio). The speaker wire is on one side red and on the other one black. Connect to the red side of the amplifier and speakers (+) tab. Connect one end of the black side (-) in the other tab. Connect each speaker to make sure that is not (+,-) inverted polarity. If the polarity of the speakers is reversed, the sound will be unnatural and will play without bass.

UNDERPOWERING VS. OVERPOWERING

- Most speaker damage is caused by amplifiers with too little power (wattage).
- An overdriven amplifier clips the waveforms and sends distortion to the speakers.
- Clipping is usually audible; it may vary from a harsh sound to a fuzzy or unclear sound.
- If you hear this condition at loud volume levels, turn down the volume until the distortion is no longer present.
- Damage caused by operating the speakers at distorted volume levels is not covered by the warranty.

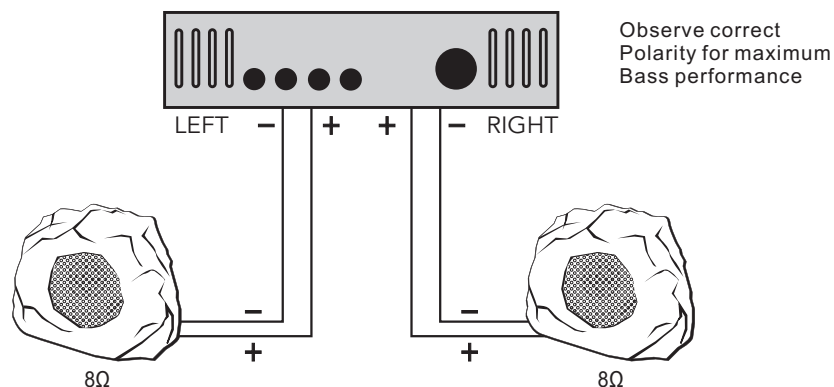
EXAMPLE OF 70V/100V SYSTEM CONFIGURATION



NOTE: The total number of speakers multiplied by the tap value cannot exceed the output power (in watts) of the 70V /100V amplifier. The above example shows 5 total speakers. Using the 16W taps, you will need an amplifier with at least $(5) \times (16) = 80W$. A good rule of thumb is to select an amplifier with 20% greater power; in this case, an amplifier that delivers about 100W.

UNDERPOWERING VS. OVERPOWERING

2-CHANNEL AMPLIFIER WITH 8Ω OUTPUT



2 SPEAKERS PER CHANNEL CONNECTED IN PARALLEL

TECHNICAL SPECIFICATIONS

Model	ULISSE ROCK16T
Frequency Resp(-10dB)(Hz)	80-20K
Sensitivity(1W/1M)(dB)	88
Impedance(ohm)	8
RMS power(watts)	60
Peak power(watts)	70
Transformer tapes	70V:32-16-8-4-2W & 8ohms
	100V:32-16-8-4-2W & 8ohms
Enclosure material	LLDPE
Environment	IP56
Product Dimensions(mm)	320x230x270

Introduction

Thank you for buying outdoor speaker. Please read and have a thorough understanding of the entire manual before installation and use. Keep the manual for maintenance.

IMPORTANT: VIVALDI SRL has made every effort to provide accurate and detailed instruction for this product's assembly and installation. Should you have any doubts consult a qualified professional fitter, VIVALDI SRL recognizes no liability for any difficulty or problem derived from the interpretation of these instructions. These brackets and all their parts and accessories must only be used for the purpose they have been constructed. VIVALDI SRL, its commercial distributors and retailers are not, directly or indirectly, responsible for any damage to persons and or properties derived from the use of this product in an unsafe or different way for which it has been designed and constructed. Several parts of this product are small pieces of hardware therefore extreme care should be taken to keep them from children.

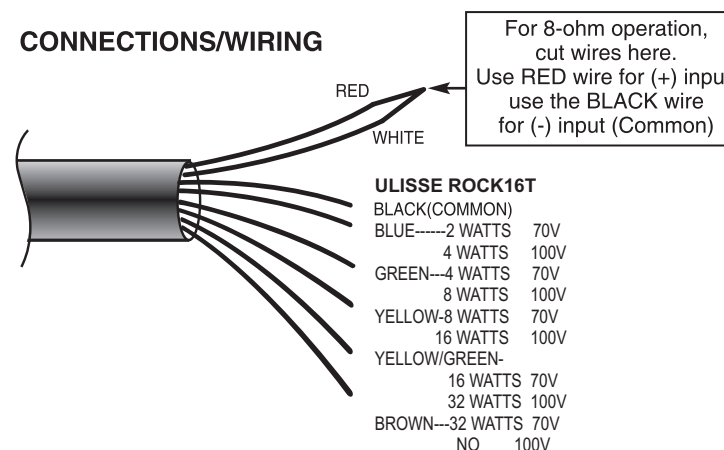
Read these instructions carefully before using the product

1. When the speakers are installed outdoor, check that the wall structure is reliable and that the speaker is firmly attached. The user should be responsible for this very thing.
2. Do not place the speakers on a turntable or movable support.
3. Do not touch or bump the woofer and tweeter. If these are damaged, the sound will be distorted.
4. Do not listen to sound at a very high level when you are changing the input source (for example, to tune FM / CD) installation or removal of cables should make sure that the power amp / amplifier device radio is turned off.
5. Don't attempt to clean the speakers with chemical solvents as this may damage the paint surface. Clean with a dry cloth.

Direct Burial Wire or Conduit

Depending on the type of installation, direct burial of the speaker wires from the amplifier to the loudspeakers may be adequate, or the use of 12 ID conduit may be required for protecting the wires from possible physical damage if future excavation or other alterations are anticipated in the area of the installation.

CONNECTIONS/WIRING



Connections can be protected using one of the following methods:

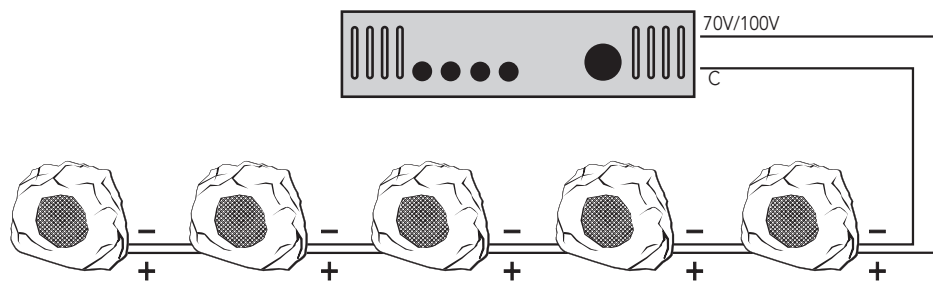
- Solder wires together using waterproof heat shrink tubing to seal.
- Use Waterproof Wire Connectors.
- Make connections with immersion-resistant Crimp Splices (Raychem).
- Use Grease Wire Caps available from several suppliers (Orbit, Toro Irrigation, etc.).

Connection

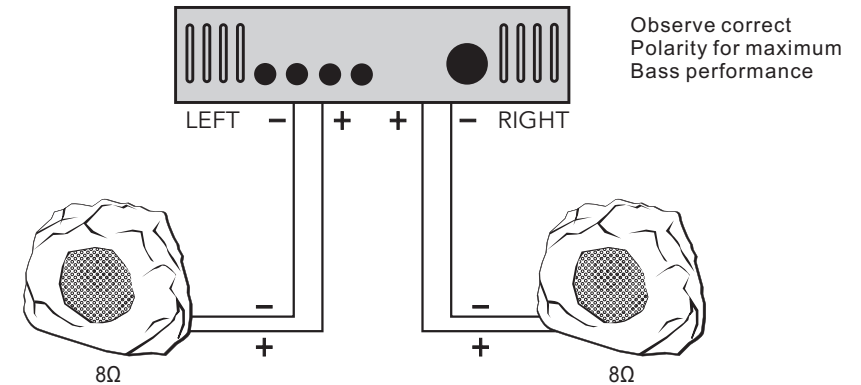
Use wire on the back of the speaker in the output tab of the amplifier (or amplifiers of radio). The speaker wire is on one side red and on the other one black. Connect to the red side of the amplifier and speakers (+) tab. Connect one end of the black side (-) in the other tab. Connect each speaker to make sure that is not (+,-) inverted polarity. If the polarity of the speakers is reversed, the sound will be unnatural and will play without bass.

UNDERPOWERING VS. OVERPOWERING

- Most speaker damage is caused by amplifiers with too little power (wattage).
- An overdriven amplifier clips the waveforms and sends distortion to the speakers.
- Clipping is usually audible; it may vary from a harsh sound to a fuzzy or unclear sound.
- If you hear this condition at loud volume levels, turn down the volume until the distortion is no longer present.
- Damage caused by operating the speakers at distorted volume levels is not covered by the warranty.

EXAMPLE OF 70V/100V SYSTEM CONFIGURATION**5 SPEAKERS CONNECTED IN PARALLEL USING 16W TAPS**

NOTE: The total number of speakers multiplied by the tap value cannot exceed the output power (in watts) of the 70V /100V amplifier. The above example shows 5 total speakers. Using the 16W taps, you will need an amplifier with at least $(5) \times (16) = 80W$. A good rule of thumb is to select an amplifier with 20% greater power; in this case, an amplifier that delivers about 100W.

UNDERPOWERING VS. OVERPOWERING**2-CHANNEL AMPLIFIER WITH 8Ω OUTPUT****2 SPEAKERS PER CHANNEL CONNECTED IN PARALLEL****TECHNICAL SPECIFICATIONS**

Model	ULISSE ROCK16T
Frequency Resp(-10dB)(Hz)	80-20K
Sensitivity(1W/1M)(dB)	88
Impedance(ohm)	8
RMS power(watts)	60
Peak power(watts)	70
Transformer tapes	70V:32-16-8-4-2W & 8ohms
	100V:32-16-8-4-2W & 8ohms
Enclosure material	LLDPE
Environment	IP56
Product Dimensions(mm)	320x230x270