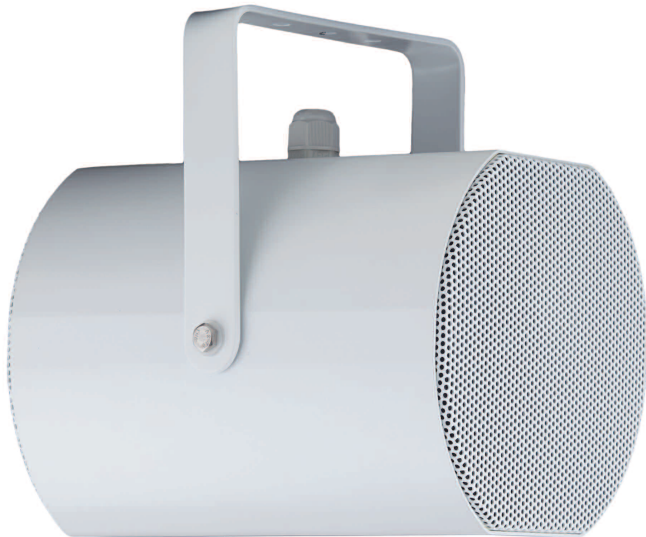


PS20BIDI

VIVALDI

B I D I R E C T I O N A L S O U N D P R O J E C T O R



- WATERPROOF IP65
- INDOOR AND OUTDOOR APPLICATION
- 20W POWER @ 100V
- ALUMINUM CABINET
- EN54-24 COMPLIANCE

GENERAL:

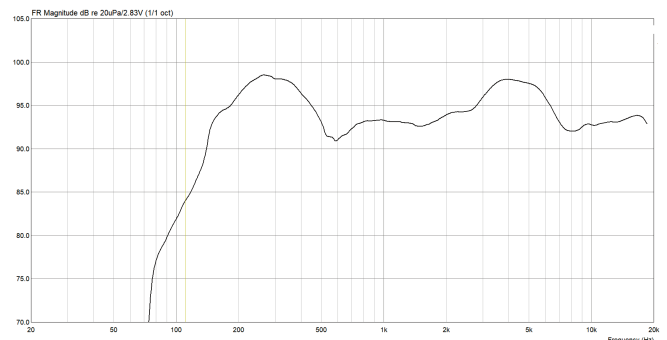
Bidirectional sound projector PS20BIDI has been conceived for outdoor and indoor applications and it isn't afraid of most difficult environment situations, thanks to the metallic construction.

It is provided with a multi-wire cable 50cm length. It could be easily mounted by its metal painted bracket. It has four 100V power selection: 2.5W/5W/10W/20W

FEATURES:

- Dimensions: 218x151x210 mm
- Weight: 3.4 kg
- Frequency response: 110 : 20000 Hz
- Sensitivity (1W/1mt): 94 dB
- SPL max @20W: 107 dB
- Nominal power 100V: 2.5/5/10/20W
- Nominal impedance: 4.6k/2.3k/1.1k/0.58k Ohm
- Maximum power: 20W
- RNP: >= 100h
- Nominal voltage: 100V
- IP protection: 65
- Material: painted Aluminum

FREQUENCY RESPONSE:



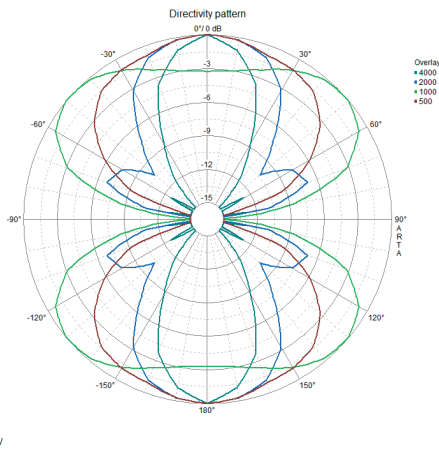
INSTALLATION & CONNECTION:

For the correct speaker installation, fix on wall the "C" shape bracket using the provided holes (d=7mm). Fix bracket screws at the lateral threaded holes. Connect audio cable from amplifier to the provided speaker cable. Connect common wire (0) to the black speaker wire and power wire to the coloured wire, depending on the desired power.

- 2.5W= Green
- 5 W= Yellow
- 10 W= Blue
- 20 W= White

Unused wires must be insulated each one!

POLAR DIAGRAM (H-V):



PS20BIDI H - V

SOUND PRESSURE PER OCTAVE:

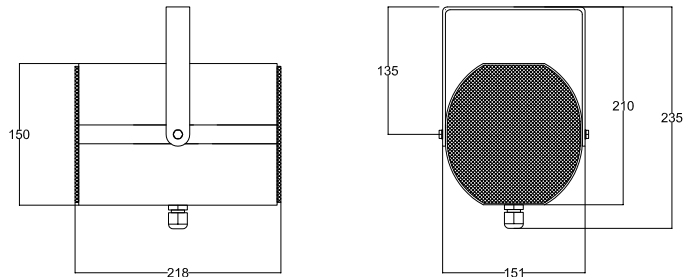
	Oct. SPL 1W/1mt	Oct. SPL Pmax/1mt
250Hz	92	104
500Hz	91	102
1000Hz	90	101
2000Hz	93	105
4000Hz	96	109
8000Hz	97	108

Pink noise measures, all data in dB SPL value.

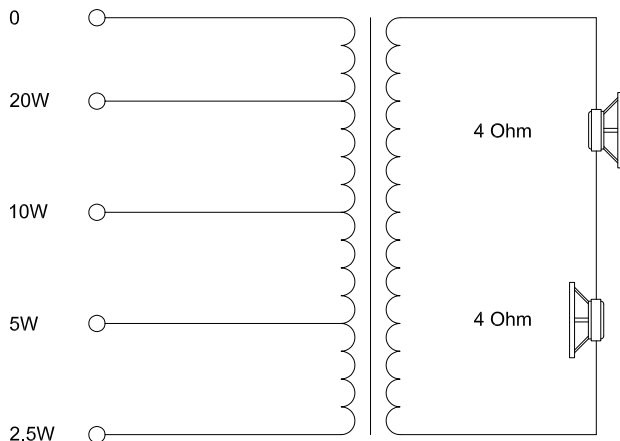
COVER ANGLE (-6dB):


	Horizontal	Vertical
500Hz	120°	120°
1000Hz	161.8°	161.8°
2000Hz	73.7°	73.7°
4000Hz	48.8°	48.8°

DIMENSIONS (mm):



SCHEMATIC CIRCUIT:





16

VIVALDI srl
via E. Fermi, 8
Noventa di Piave
(Venice)
Italy

0068 - CPR - 017/2016

EN 54-24:2008

Loudspeaker for voice alarm systems
for fire detection and fire alarm systems for buildings

PS20BIDI
Bidirectional sound projector 20W

Environment Type B

See documentation DoP n° 0170022016



To download documentation and certificate scan QR code or go to vivaldigroup.it and search the product code.



This is a WEEE device, thus you must dispose it following the local law. Please think at the environment!

